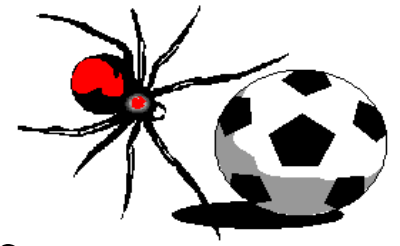


YASS FOOTBALL CLUB Inc

Redbacks



INFORMATION AND PAYMENT TIMES

**FRIDAY 10 & 17 FEBRUARY 2012
5:30-7:30PM**

**SATURDAY 25 FEBRUARY 2012
9:00AM – 12 NOON**

WALKER PARK YASS

Men's League

Commences
Saturday 14 April 2012
Rego \$240 per player

Women's League

Commences
Sunday 15 April 2012
Rego \$250 per player

Junior League

Commences
Saturday 5 May 2012
Registration Fee
Pee wee's will play at home each week
U/5 – U7 \$60 per player
U/8 – U9 \$60 per player
U/10 –U/18 \$100 per player
The competition is for players
born 1994 – 30 April 2007

Player numbers are limited – trials maybe necessary
Enquiries Drew Gallagher 0408 633 143 Jodie Gallagher 0400 260172

**Yass Redbacks Junior Winter Teams are sponsored by
Yass Soldiers Club**

Best and Fairest sponsored by Patrick's Butchery

Mens Teams sponsored by the Club House Hotel and
Caltex Woolworths Yass

Womens Team sponsored by Galutzi Café and Yass Chiropractic

YASS FOOTBALL CLUB Inc

Redbacks



**Winter
Season
2012**

Player Registration

With the approach of the 2012 season, it is time for new and continuing players to register with the Club for the Winter Competition.

Information Times

Friday 10th & 17th February 2012

5:30-7:30pm

Saturday 25th February 2012

9:00am – 12 Noon

Walker Park, Yass

Registrations are to be completed online at myfootballclub.com.au. For details on how to register please see the Registration Tab on www.Yassfc.com.au. Fees are to be paid by cash or cheques at the club on the information day please bring your Myfootball Club invoice. Cheques made payable to Yass Football Club Inc.

Registration Deadline

All players are requested to finalise their registration no later than Saturday 25th February 2012.

This deadline is necessary so that team composition, training times and days can be organised.

Late registrations may not be accepted.

Training for Juniors will commence March/April usually Mondays, (plus Wednesdays for the older teams). You will be notified of the exact time & day as soon as team composition and ground availability is known. Non financial members are not covered by Capital Football insurances and must not participate in training sessions or games. Training times and team details will be available on the website as soon as they are finalised.

Game Details

| Division | No of players on field | Max. No of players per team | Duration of game | Game Time |
|----------------|------------------------|-----------------------------|------------------|-----------|
| Men's League | 11 | 16 | 2 x 45 mins | Saturday |
| Women's League | 11 | 16 | 2 x 40 mins | Sunday |

Junior League

| | | | | |
|------|----|----|-------------|---------|
| U/18 | 11 | 15 | 2 x 45 mins | 3.10pm |
| U/16 | 11 | 15 | 2 x 45 mins | 3.10pm |
| U/15 | 11 | 15 | 2 x 40 mins | 3.10pm |
| U/14 | 11 | 15 | 2 x 35 mins | 1.45pm |
| U/13 | 11 | 15 | 2 x 30 mins | 12.30pm |
| U/12 | 11 | 15 | 2 x 30 mins | 1.45pm |

SMALL SIDED GAME

| | | | | |
|-----------|---|----|-------------|---------|
| U/11 | 9 | 12 | 2 x 25 mins | 12.30pm |
| U/10 | 7 | 10 | 2 x 25 mins | 11.30am |
| U/9 | 7 | 10 | 2 x 20 mins | 10.35am |
| U/8 | 5 | 8 | 2 x 20 mins | 9.40am |
| U/5 - U/7 | 4 | 8 | 2 x 15 mins | 9.00am |

Clothing & Equipment

Shorts and socks can be purchased through the Club. Order forms & samples of the various sizes will be available on Registration Day.

Socks \$10.00
Shorts \$20.00

Player's Shirts are owned and provided by the Club.

Football Boots and Shin Pads are required.

Boot Pool

The Club has a small Boot Pool; this will be available on Registration Day.

**Please visit our website: www.yassfc.com.au
or contact Drew Gallagher 0408 633 143**